



## Experiment Overview

### Objective

To create a strategic project with an expanded partnership for the multifunctional use of forests, which will be included in the 2023/2027 local development strategy of the LAG Montagnappennino.

### Relevance

Valorisation of the multifunctional role of forests and community regeneration

### Key innovation

1. Integration of different sources of information to generate new knowledge;
2. participatory governance by engaging local communities in sustainable forest management

## Experiment Progress

### What has happened so far with our experiment?

- 1) Stakeholder Mapping across the forest supply chain
- 2) Data Collection by compiling an inventory of existing data on the forest supply chain, and cataloguing projects related to forest management within the Pilot Region.
- 3) Perception Survey on Forest Economy, to capture forest supply chain actors' perceptions regarding the potentials and limitations of the forest economy.

### Methods and tools

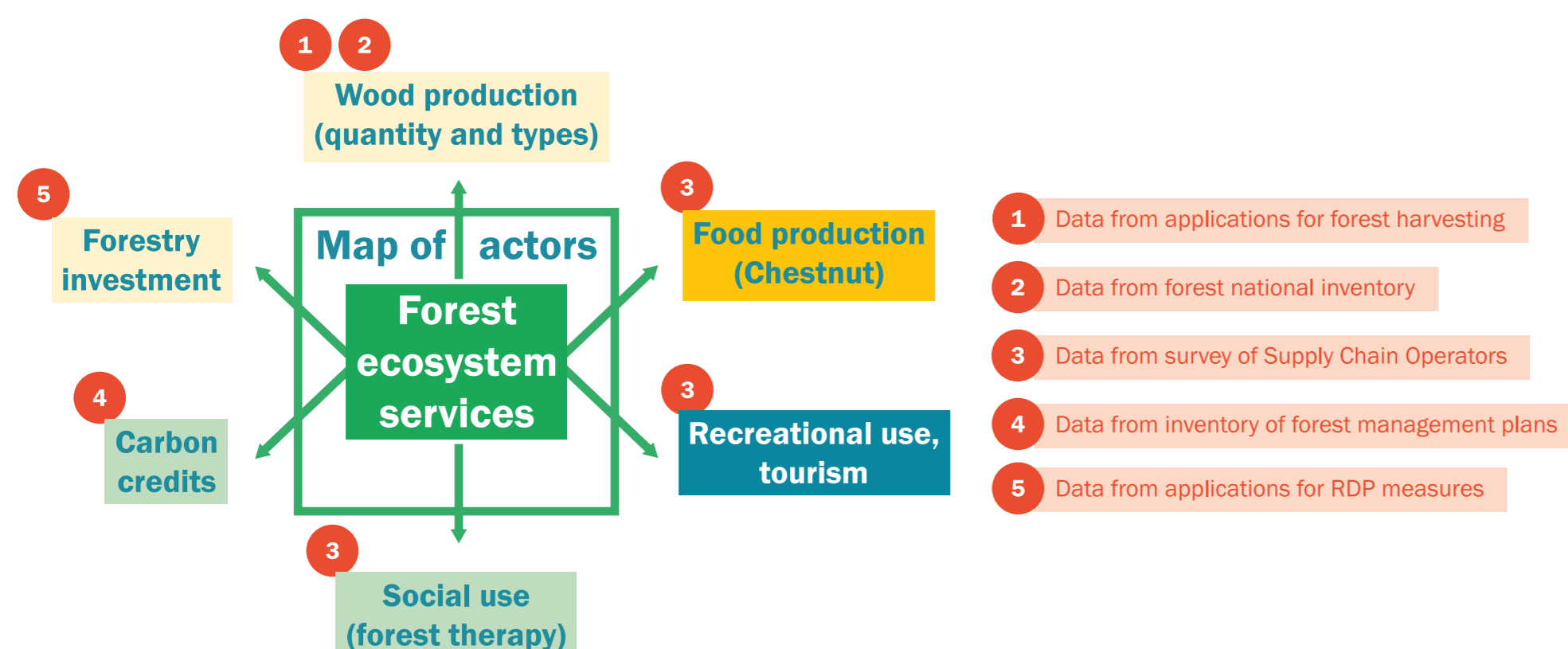
- Two early focus groups with different components of local economy (forest stakeholders; representatives of social associations)
- One-day workshop with forest supply chain representatives covering 3 thematic aspects
- Survey covering different categories of stakeholders, such as landowners, wood processors, tourist firms, local authorities' representatives, etc.
- Horizontal communication

### Findings

- **Better identification of local challenges** in forest resource management due to limited innovation, fragmented governance, cultural distrust and the difficulty of recognizing forests as commons
- **Broad involvement and engagement** from people involved with forest resources (including tourism and social activities).
- **Strong participation** and cooperation from regional and local administrations.

### Tackling the challenge

- **Enhanced knowledge integration:** By merging data from multiple sources, the project is creating new insights into the forest economy.
- **Improved information sharing:** Facilitated exchanges of knowledge on both opportunities and challenges within the forest sector.
- **Foundation for strategic implementation:** Established a basis for designing the next phase of the strategic project.

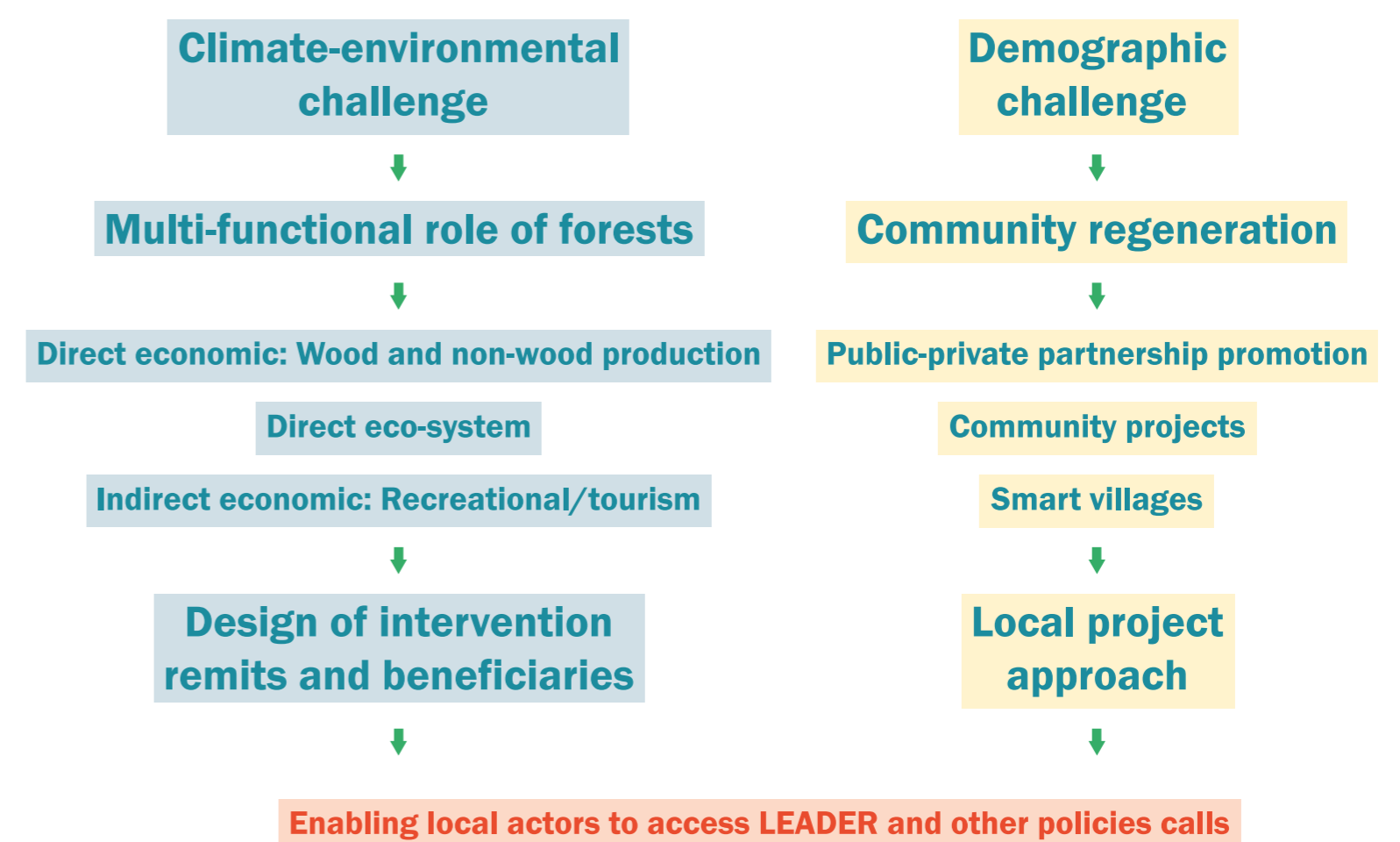


### What went well?

- **Effective involvement** of local stakeholders and active participation in Living Lab (LL) activities.
- **Successful collection of diverse data** on the current state of the forest economy.

### Challenges

- **Difficulties in harmonizing data** from various sources and with differing levels of detail and granularity.
- **Achieving a representative sample** in the survey to fully capture local forest-related perceptions.



### Learning

- The local information pool is **rich but highly fragmented**, which suggests a need for better information integration.
- **Consistent and sustained engagement** in Living Lab activities is essential for achieving long-term project goals.
- 

### Next steps

- **Integrate collected data across sources**, by synthesizing information gathered so far using a series of maps to visualize key insights.
- **Map policy uptake in the pilot region:** identify and analyse how various policies are being adopted and implemented locally.
- **Assess and compare needs and policy instruments:** map out and evaluate the alignment between local needs and existing policy tools.
- **Gather stakeholder feedback:** engage stakeholders to validate findings and gather input on proposed strategies.

### Goals for the Living Lab in 2025

- Identify a theme and project focus that addresses the multifunctional role of the forest, aiming to collaborate with a broad partnership
- Starting the preparation of a proposal for an integrated strategic project with a broad partnership of forest supply chain actors
- Identify the framework for project implementation, considering that LAG's strategy includes cooperation projects, community regeneration projects, strategic projects in the smart village context, and funding to public entities and microenterprises

